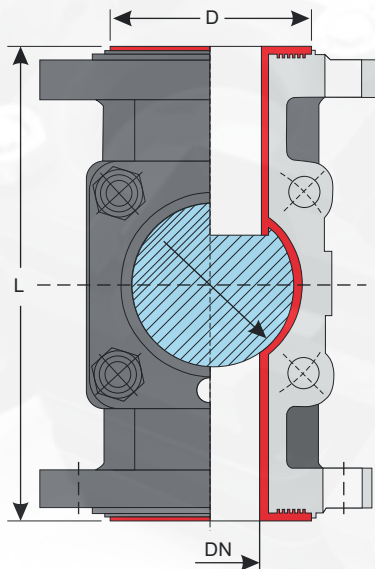
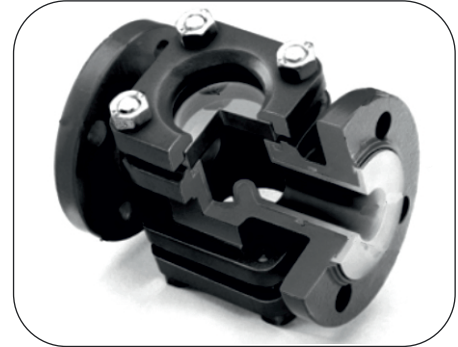




X-Line

SIGHT FLOW INDICATOR

- Steel frame: ASTM A234 grade WPB, in compliance with ANSI B16.28
- Steel sight glass piece : according to SCH 40.
- Flange: ASTM A105, in compliance with ANSI B16.5/Class 150lbs; JIS 10K or DIN is also available on request.
- Standard: Two fixed flanges; one loose and one fixed flanges or two loose flanges are on request.
- Lining: Pure FEP I PFA in compliance with ASTM D4894.
- Glass : Toughened with PTFE gasket
- Other nominal sizes are available on request.
- Available on request:
 - ANSI B16.5 Class 300 flanges
 - Vacuum resistance
 - Antistatic PTFE
 - Stainless Steel body
 - Higher diameters on request



(Unit : mm)

Nominal Size		d4	L	t
Inch	mm			
1	(25)	68	160	3
1 ½	(40)	88	200	3
2	(50)	102	230	3
3	(80)	138	310	3
4	(100)	158	350	3
6	(150)	212	480	4
8	(200)	268	600	4