

PTFE Nozzle Liner

3G PTFE nozzle liners provide protection for nozzles and manways on process vessels. They prevent chipping from insertion and use of dip pipes, thermal shock, instrumentation, or dropped or mishandled tools. They can also reduce scaling and build-up of solids. Also use them to protect surfaces of other lined or unlined nozzles from corrosive fluids, abrasive slurries, or erosive high velocity streams.

Check our tables of standard sizes. We also offer full-face units, and can make virtually any special size you need.

DN	D1 mm	D3 mm	S mm	Lmax mm	PTFE SW
1"	51	20	3.0	3000	•
1 ¼"	54	28	3.0	3000	•
1 ½"	73	32	3.0	3000	•
2"	92	41	3.0	3000	•
2 ½"	105	56	3.5	3000	•
3"	127	66	3.5	3000	•
4"	158	94	4.0	3000	•
5"	186	117	4.0	3000	•
6"	216	139	5.0	3000	•
8"	270	182	6.0	3000	•
10"	324	231	7.0	3000	•
12"	381	288	7.0	3000	•

Nozzle Size

Standard liners fit nozzles from 1/2" to 18" pipe size. Special sizes available on request.

Length

Up to 4" nominal pipe size, lengths available to 15 feet. Over 4" nominal size, lengths available to 30".

Flange Diameter

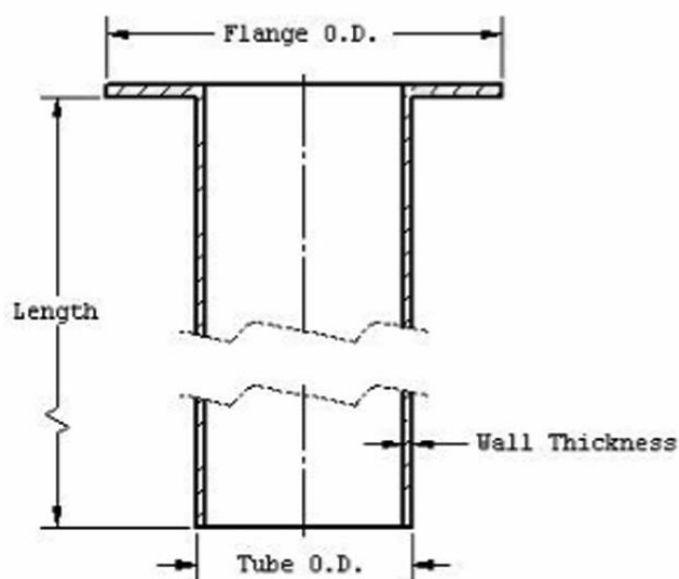
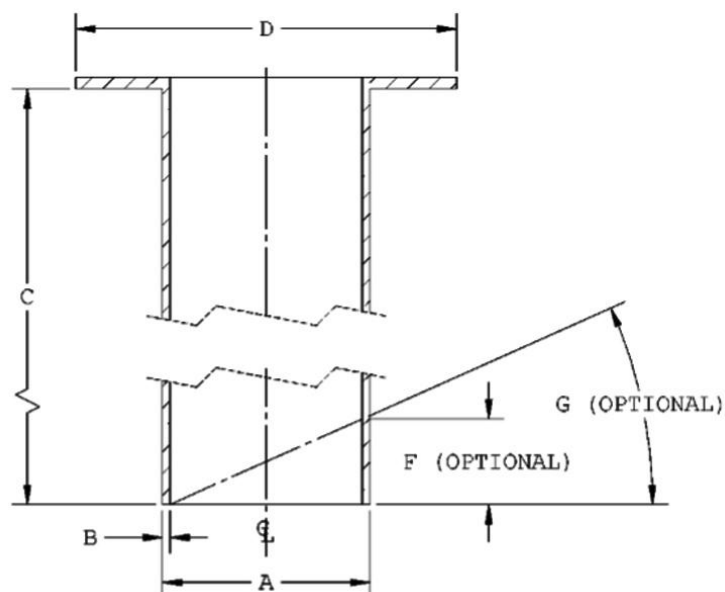
Minimum diameter of flange of standard liners corresponds to the raised face of ANSI Class 150 flanges. Full face or other special flange diameters available on request.

Thickness

Wall thickness of standard liners increases with liner size, from a minimum of 1/16" wall up to 1/4" wall. Nonstandard wall thickness available on request. Seal thickness equal to wall thickness standard, other seal thicknesses available on request.

End

Square cut end is standard. Diagonal cut available on request.



Dimension	Description	Size
Required Data:		
A	Sleeve O.D. (smaller than the nozzle I.D. by 1/8" or more)	(max.—18" pipe size)
B	Sleeve wall thickness	
C	Sleeve length (excluding flange)	(max.—30")
D	Flange O.D.	(max.—21")
E	Flange thickness	
Optional Data:		
F	Diagonal cut	
G	Diagonal angle	

PTFE NOZZLE LINER

